

Fuse Holders

Fuse Holder Kit #0003-FH Available (Page 5)

Cut Wire Loop and Splice Into Circuit Needing To Be Fuse Protected



Nylon In-Line Fuse Holder With Fuse
#0900 - Red 14 GA Wire 20 AMP
#0901 - Red 14 GA Wire 30 AMP

Part #	Qty	Part #	Qty	Part #	Qty	Part #	Qty
0900A	100	0900C	1	0900PT	1	0900L	Card of 9
0901A	100	0901C	1	0901PT	1	0901L	Card of 9



In-Line Fuse Holder With Universal Nylon Body
For AGC & JSO Glass Fuses
#0905 - Black 16 GA Wire 15 AMP
#0906 - Black 12 GA Wire 30 AMP

Part #	Qty	Part #	Qty	Part #	Qty	Part #	Qty
0905A	100	0905C	1	0905PT	1	0905L	Card of 9
0906A	100	0906C	1	0906PT	1	0906L	Card of 9



ATC/ATO Type Fuse Holders with 7" Wire Loop
#0961 - Black 16 GA Wire 10 AMP
#0963 - Red 12 GA Wire 20 AMP

Part #	Qty	Part #	Qty	Part #	Qty	Part #	Qty
0961A	100	0961C	1	0961PT	1	0961L	Card of 9
0963A	100	0963C	1	0963PT	1	0963L	Card of 9



ATM Mini Fuse Holder With Dust Cap & 10" Wire
#0965 - Orange 16 GA Wire 10 AMP
#0967 - Black 12 GA Wire 30 AMP

Part #	Qty	Part #	Qty	Part #	Qty
0965A	100	0965C	1	0965PT	1
0967A	100	0967C	1	0967PT	1



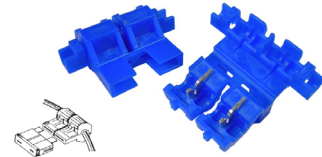
ATR Micro 2-Blade Fuse Holder With Dust Cap & 12" Wire
#0959 - Red 16 GA Wire 10 AMP
#0960 - Red 12 GA Wire 30 AMP

Part #	Qty	Part #	Qty	Part #	Qty
0959A	100	0959C	1	0959PT	1
0960A	100	0960C	1	0960PT	1



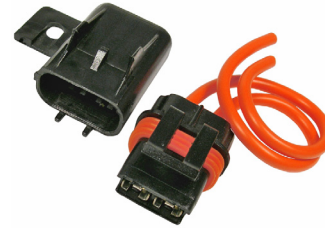
Maxi Fuse Holder
PVC With Dust Cap
12" Red 8 Gauge Wire
60 AMP (Does not include fuse)

Part #	Qty
0969A	25
0969C	1
0969PT	1



Self-Stripping Fuse Holder
Locate New Fuse Position
Insert Wire & Crimp
Mates With Blade Type Fuses
20 AMP - 16-14 AWG

Part #	Qty
0972A	100
0972C	2
0972PT	2
0972L	Card of 9



#0948 - ATM Mini Fuse Holder
Red 12 GA Wire 3 to 30 AMP

Part #	Qty
0948A	25
0948C	1
0948PT	1
0950A	25
0950C	1
0950PT	1

#0950 - ATC/ATO Fuse Holder
Orange 12 GA Wire 3 to 30 AMP

Weather Resistant
Nylon Body With Latching Cap
Rubber Seal Protects Fuses

Fusible Links

Fusible Links "Open" Circuit When Overload Occurs
Prevents Damage To Wire Harness
Fusible Links Are NOT Intended To Replace Fuse
Use In Conjunction With Fuse

Extreme Caution should be taken when replacing a Fusible Link making sure an exact replacement of gauge and length as installed by original manufacture is used.



Part #	Part #	AWG	Stud	Length	Color	Description
5550P	5550PT	16 Ga	1/4"	9 1/4"	Black	GM Starter Solenoid
5551P	5551PT	14 Ga	3/8"	9 1/2"	Black	GM Starter Solenoid

Part #	Part #	AWG	Stud	Length	Color	Description
5552P	5552PT	18 Ga	5/16"	10 1/2"	Red	Ford Starter Solenoid
5553P	5553PT	16 Ga	5/16"	10 1/2"	Orange	Ford Starter Solenoid
5554P	5554PT	14 Ga	5/16"	10 1/2"	Green	Ford Starter Solenoid

Part #	Part #	AWG	Length	Color	Description
5555P	5555PT	18 Ga	8"	Black	Chrysler & Universal Ignition Battery
5556P	5556PT	16 Ga	8"	Black	Chrysler Feed, W/W, R/Window Defogger
5557P	5557PT	20 Ga	8"	Black	Universal

Fusible Link Wire



Opens Circuit When Extreme Overload Occurs
Repair Factory Installed Fusible Links
Original Length & Gauge Must Match Exactly
Fusible Link Should Be 4 Gauges Smaller Than Circuit

CAUTION:
Do not substitute ordinary wire for fusible links.
Do not replace fuses with fusible link wire.
Technical calculations determine correct length & gauge of fusible links.

AWG	MM	Part #	Qty	Part #	Qty
10	5 mm	8122S	75'	8122C	1'
10	5 mm	—	—	8122PT	1'
12	3 mm	8124S	100'	8124C	4'
12	3 mm	—	—	8124PT	4'
14	2 mm	8125S	100'	8125C	6'
14	2 mm	—	—	8125PT	6'
16	1 mm	8126S	100'	8126C	7'
16	1 mm	—	—	8126PT	7'
18	.6 mm	8123S	100'	8123C	8'
18	.6 mm	—	—	8123PT	8'

All Items with QT, KT, GT or PT Suffix are Clam Shell Program Items.