

Closed End Connectors

Flared Nylon Cap
Electro-Tin Plated Copper Insert
Terminates Groups of 2-4 Wires
Insert Stripped Wires Into Connector Insert
& Crimp On Insert
(Wire Not Included)



16-14 AWG		12-10 AWG		8 AWG	
Part #	Qty	Part #	Qty	Part #	Qty
1266A	1000	1366A	500	4066A	250
1266C	50	1366C	25	4066C	20
1266H	14	--	--	--	--
1266D	10	1366D	9	--	--
1266M	4	1366M	3	--	--
1266PT	50	1366PT	25	--	--
1266KT	10	1366KT	6	4066KT	1
1266QT	4	1366QT	3	--	--

Twist Connects

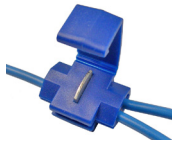
Screw Connectors Onto Ends of Stripped Wires
Terminates Groups of Two to Four Wires
(Wire Not Included)



Color	Gauge	Part #	Qty	Part #	Qty	Part #	Qty
Assorted Sizes		1543C	25	--	--	1543PT	25
Orange	16-14 AWG	1545A	1000	1545H	20	1545PT	50
	Min 2 #18 Ga	1545C	50	1545D	15	1545KT	20
	Max 2 #16 Ga	--	--	1545M	6	1545QT	6
Blue	18-16 AWG	1544A	500	--	--	1544PT	25
	Min 3 #22 Ga	1544C	25	1544D	13	1544KT	15
	Max 3 #16 Ga	--	--	1544M	5	1544QT	5
Yellow	14-12 AWG	1546A	250	1546H	10	1546PT	15
	Min 4 #18 Ga	1546C	15	1546D	7	1546KT	6
	Max 2 #12 Ga	--	--	1546M	3	1546QT	3

Tap-In Connectors

Insert Hot Line & Tap-In
Compress Metal Clip With Pliers
Close Cover



Red
22-18 AWG

Part #	Qty
1558A	250
1558C	15
1558D	3
1558M	1
1558PT	15
1558KT	5
1558QT	1



Brown
18-14 AWG Tap-In
12-10 AWG Hot Line

Part #	Qty
1561A	100
1561C	5
1561D	2
1561PT	5
1561KT	2
1561QT	1



Yellow
12-10 AWG

Part #	Qty
1562A	100
1562C	5
1562D	3
1562PT	5
1562KT	2
1562QT	1



Blue 18-14 AWG

Part #	Qty	Part #	Qty
1560A	250	--	--
1560G	50	1560GT	50
1560C	15	1560PT	15
1560H	7	1560KT	5
1560D	5	--	--
1560M	2	1560QT	2



White
18-14 AWG
Hot Line & Tap-in
Pass Through

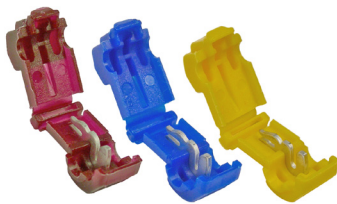
Part #	Qty
1564A	250
1564C	15
1564D	4
1564PT	15
1564KT	2
1564QT	1



GEL-FILLED
Weatherproof
Blue
18-14 AWG

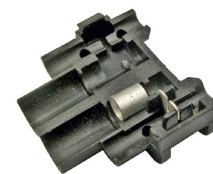
Part #	Qty
1565A	250
1565C	15
1565H	3
1565PT	15
1565KT	3

Snap T-Tap On Hot Wire
Insert .250" Male Tab



Combo #1887

Red		Blue		Yellow	
22-18 AWG		18-14 AWG		12-10 AWG	
Part #	Qty	Part #	Qty	Part #	Qty
1567A	250	1568A	250	1569A	250
1567C	15	1568C	15	1569C	15
1567D	4	1568D	4	1569D	4
1567PT	15	1568PT	15	1569PT	15
1567KT	4	1568KT	4	1569KT	4
1567QT	2	1568QT	2	1569QT	2



Insert Hot Line
Close Case
Tap-In With .157" Bullet



Black
18-14 AWG

Part #	Qty
1580A	200
1580C	10
1580D	3
1580PT	10
1580KT	2
1580QT	1

IDC Connector

Connects 2 or 3 Wire Ends
Self Stripping - Insert Wires & Compress Blue Top
Internal Grease Pocket Provides a Moisture Resistant Seal



Blue
22-14 AWG

Part #	Qty
1556A	25
1556C	3
1556PT	3

Pin Connectors

Single Wire Disconnect For Use On Truck/Trailer Plugs
& European Style Terminal Blocks



Pins Measured By Diameter Of Tip

Red		Blue		Yellow	
.08 Pin		.08 Pin		.11 Pin	
22-16 AWG		16-14 AWG		12-10 AWG	
Part #	Qty	Part #	Qty	Part #	Qty
1769A	1000	1869A	1000	1969A	500
1769C	50	1869C	50	1969C	50
1769D	12	1869D	12	1969D	8
1769M	5	1869M	5	1969M	4
1769PT	50	1869PT	50	1969PT	50
1769KT	12	1869KT	12	1969KT	10
1769QT	5	1869QT	5	1969QT	4